



Nuova Rade

Zefiro

ZEFIRO WASTE WATER TANK

196881 - ZEFIRO Tank Waste Water 40lt Vertical

196882 - ZEFIRO Tank Waste Water 60lt Vertical



SUMMARY

INSTALLATION SCHEME	1
INSTALLATION	2
USE AND MAINTENANCE	3

ZEFIRO WASTE WATER TANK

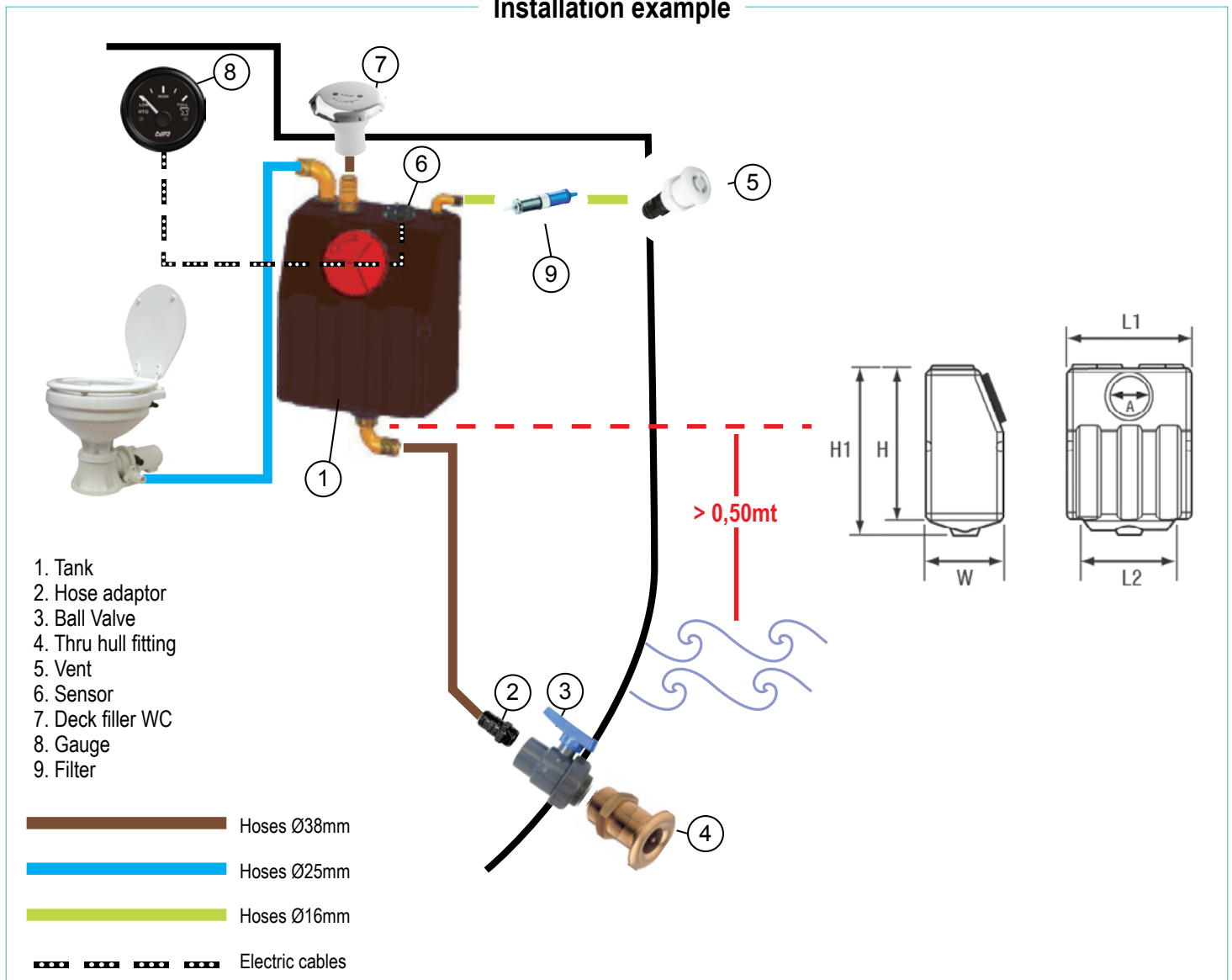
INSTALLATION SCHEME

The Zefiro tank is made from odour-free high density polyethylene (HDPE) and it is shaped in order to allow effective discharge. It is compatible with diaphragm pumps and macerators (12 or 24 V) and it is supplied with:

- 1 inlet and 2 outlets Ø 38 mm-G 1 1/2"
- 1 vent Ø 25 mm-G 3/4 "
- 1 inspection hatch: Ø127 mm
- Plate compatible with VDO standard sensors

When installation is carried out at more than 0.5 m above the waterline, the tank can be emptied without a pump. And it can be mounted on a bulkhead. Accessories available for this product: sensor, gauge, vented loop, ball valve, filter, deck filler.

Installation example



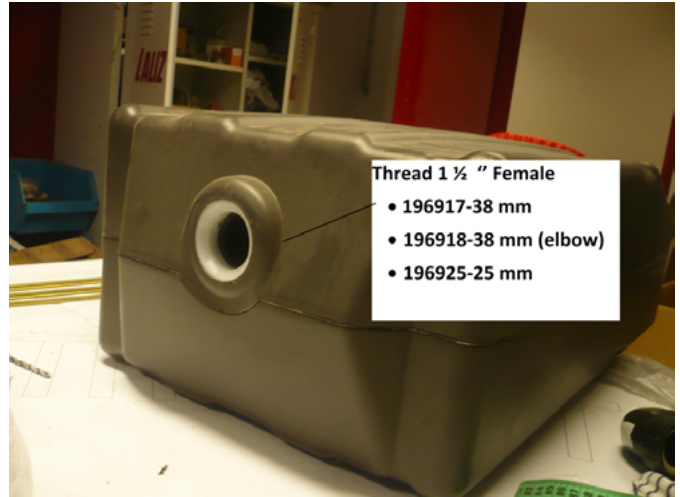
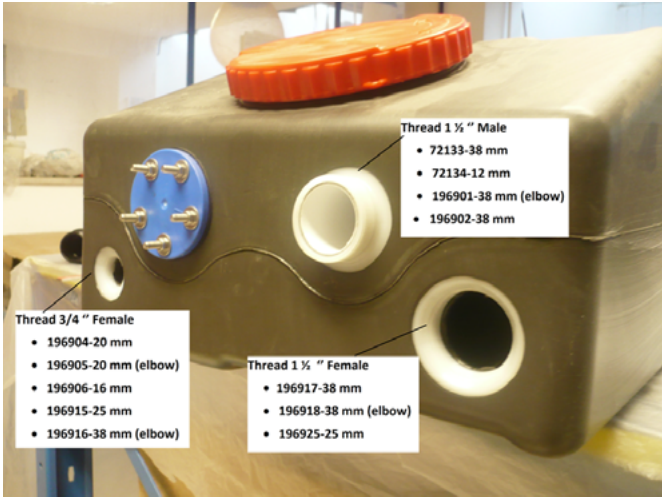
Installation

Warning! For a correct installation of the system, please refer to ISO 8099 Norm.

1. Connectors fitting

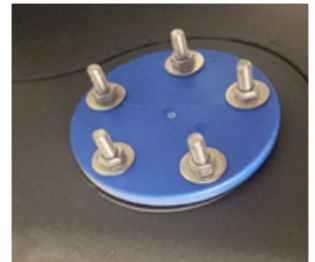
The thread of the compatible connectors can be found in the image as shown below.
The included and the optional connectors can be found in the following link:

[Fittings_Connectors included & optional](#)



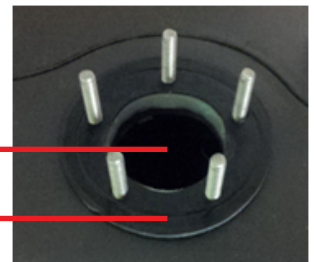
2. Sender assembly

The tank is supplied with a 5-holes flange (SAE-5 standard) to host a sender. We recommend to always use the suitable gasket to assure a proper seal.

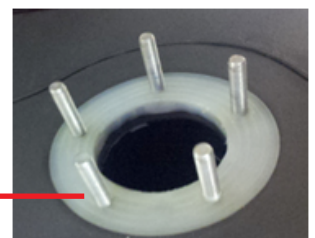


Hole for sensor

Rubber gasket included



Pre-installed screws



***Warning!**

Any damages occurred during assembling process might compromise the correct operation of the tank.

Use and Maintenance

Zefiro waste water tank requires a correct use and maintenance in order to grant a correct and regular operation. Following, please note some fundamental rules to be followed in the event of operation problems:

- ✓ Make sure that the tank is regularly discharged to prevent overpressure.
The tank has been studied and manufactured to support a maximum pressure of 0,2 bar.
- ✓ Make sure that the tank is empty and clean at the end of the season and before wintering.
WARNING! Be sure that the gasket is clean and intact before installing the sender. Nuts must be hand-screwed by using a wrench at a driving torque < 2Nm, so as to avoid irretrievable damages to the tank.
- ✓ The tank must be installed allowing inspection and the maintenance of the accessories, pipe connections, pumps etc.